



omni Nano-Ceramic
Surface Coating



CONTENTS.

• Omni application instructions	3
• Omni maintenance instructions	8
• pre-delivery detailing guide	11
• preparation of car for polishing	14



**EXTERIOR
NANO-CERAMIC
SURFACE COATING +
COMPLETE INTERIOR
APPLICATION MANUAL**



CONTENTS.

- paint application 5
- wheel & headlight application 6
- interior application 7

OMNI NANO-CERAMIC SURFACE COATING.

APPLICATION PROCEDURE (1 BOTTLE = 1 APPLICATION)

Pre-cleaning of vehicle before application of product:

1. Vehicle may need to be lightly machine buffed, or clay blocked to remove any imperfections on the paint work. When buffing door edges, bumper bars and tight areas – use the hand buffing process.
2. Wash the vehicle down thoroughly to remove any excess residue – use standard shampoo for this process.
3. Ensure all factory wax or sticker residue is removed with wax and grease remover or similar.
4. Chamois vehicle dry.
5. Do not go to Step 1 until the above process is satisfactorily completed.
6. Inspect vehicle for any paint defects.

Report any findings / faults from point 5 BEFORE pre-treating the vehicle paintwork.

NANO-CERAMIC SURFACE COATING APPLICATION:

(1 BOTTLE = 1 APPLICATION)

Ensure you have completed Pre-clean and preparation before proceeding

Ensure the bottle is shaken for at least 30 seconds, until solution is completely mixed

1. PAINTED SURFACES: Apply the Omni Nano-Ceramic Surface Coating solution liberally to the application pad and distribute evenly to the vehicle surface/s 4-6 panels at a time, using a sideways motion with the foam block, even coverage is imperative.
2. GLASS PLASTICS AND OTHER SURFACES: Apply the Omni Nano-Ceramic Surface Coating solution liberally to the application pad and distribute evenly to the vehicle surface/s 4-6 panels at a time, using a sideways motion with the foam block, even coverage is imperative.
3. DRYING TIME: Allow the panel or surfaces to cure (flash off) and dry for at least 6-8 minutes per panel/area.
4. RECOMMENDATION: For both the tops and side surfaces allow the applied solution to air-dry for approximately 6-8 minutes, while the first panel is curing, you can move on to one or more panels for time saving, but do not leave the first panel longer than 8 minutes before step 5 is actioned. Whether conditions pending (hot or cold), but a minimum of 4 minutes is a must.
5. Once each panel has had the 6-8 minute time frame, immediately hand buff with a microfiber cloth to remove excess for a brilliant lustre, continue until all the vehicle's panels have been applied.
6. Any remaining product should be used as a 2nd coat to the primary horizontal areas such as the bonnet, roof and boot of the vehicle for an even deeper lustre. Any unused remaining product should be disposed of. The product is not designed to be stored for late use once opened.
7. RESIDUE CHECK: Always do a thorough check over of the vehicle for left over residue, if you find any cured product hard to remove over coat it with Omni Nano-Ceramic Surface Coating and remove immediately using a micro fiber cloth.

NOTE: Omni Nano-Ceramic Surface Coating can be applied to side glass and rubbers/plastics. However, you must ensure that if you apply product to these surfaces that the entire rubber or plastic surface is coated, or it will look patchy.

NOTE: Latex gloves should be worn at all times, and if product is applied in confined spaces, use appropriate mask. REFER TO SDS PEP SECTION.

OMNI WHEEL & HEADLIGHT SEALANT.

APPLICATION PROCEDURE

Pre-cleaning of vehicle's wheels and headlights before application of product:

1. Wash the alloy wheels/headlights down – using the pre-wash instructions as per above.
2. Chamois dry.
3. Do not go to instruction 4 until 'pre-cleaning' process is satisfactorily completed.
4. Spray an even coat of Omni Wheel and/or Headlight Sealant to the specific surface and wipe off immediately with a microfibre cloth.

NOTE: Pre-clean can be done at the same time for both the vehicle AND the alloy wheels/headlights. Upon completion of Step 1, complete Step 2 & 3 firstly for the VEHICLE, then apply to the alloy wheels/headlights.

NOTE: Latex gloves should be worn at all times, and if product is applied in confined spaces, use appropriate mask. REFER TO SDS PEP SECTION.

OMNI COMPLETE INTERIOR.

HAND-APPLICATION PROCEDURE

Pre-cleaning of interior before application of product:

1. Remove all plastic covers from seats and trims.
2. Vehicle to be vacuumed thoroughly and cleaned.
3. Inspect for stains, tears and discolouration before applying Omni Interior Coating.
4. Proceed with Step 2 & 3 application procedures.

NOTE: Report any findings from point 3 BEFORE the application of Omni Interior Coating.

APPLICATION OF OMNI INTERIOR COATING:

Shake well prior to application

1. Before application make sure that surface is cool and not in direct sunlight. Apply to new, cleaned and dry automotive Interior surfaces.
2. FABRIC, CARPETS: Hold spray bottle vertically, approximately 15cm from carpet or fabric, spray in an even slow sweep, slightly overlapping each spray band, apply liberally. Make sure an even coat is applied. If overspray occurs on plastics, wipe it off with microfibre cloth – do not let it dry.
3. Apply in a slow sweep to all “wear areas” such as the seat base and armrests. A lighter spray application is sufficient to cover “non-wear” areas such as back of seats etc.
4. HARD SURFACES: dash, door trims, leather etc, using a foam microfibre pad, spray the application pad liberally making sure and even coverage of all coated surfaces is obtained.
5. REMAINING PRODUCT: use for a double coat of boot, mats and carpets etc.
6. Do not apply product to roof head lining, pedals, steering wheel , gear knob. Avoid application to navigation screen and ‘piano’ finish surfaces. If accidentally applied, wipe off immediately.
7. FINISH: Use a soft microfibre cloth and, proceeding to back, wipe the treated areas to ensure any imperfections or excess product is blended to a consistent finish of the new car appearance.

Drying time is approximately one hour at room temperature.

NOTE: On days with a lot of moisture in the air, a longer drying period will result.

NOTE: Latex gloves should be worn at all times, and if product is applied in confined spaces, use appropriate mask. REFER TO SDS PEP SECTION.



OMNI MAINTENANCE INSTRUCTIONS

OMNI CARE INSTRUCTIONS.

NANO-CERAMIC SURFACE COATING

Do not wash the vehicle with any car wash/shampoo for the first 3 days. Omni's unique curing process takes around 3 days and during this time use only clear water to remove contaminants from the surface.

Once the curing time has elapsed, follow the instructions as below:

- Hand wash your vehicle as required using a pH neutral car wash/shampoo.
- We recommend using Omni Car Shampoo which has been formulated to be completely compatible with your paint surface coating. Omni Car Shampoo can be purchased from your selling dealership or by contacting Omni in your state.
- Avoid using car washes/shampoos that contain degreasers or solvents and do not polish the vehicle. These products may affect the life of the coating.
- Do not take the vehicle through automated car washes that use abrasive washing actions or harsh chemicals – this also has the potential to damage the coating.

Step 1: Prior to washing, thoroughly hose your vehicle to dislodge loose dirt/contaminates. Washing your car in the shade when the metal is cool will prevent premature evaporation of the Omni shampoo and produce the best results.

Step 2: Mix 2 caps of Omni shampoo in a 10 litre bucket of water (warm water if possible).

Step 3: Use a clean sponge and dip into the bucket, washing the vehicle from top panels down. Rinse the sponge after washing each panel to dislodge any contaminants that may have accumulated in the sponge during the washing process.

Step 4: Thoroughly rinse the shampoo residue from your vehicle.

Step 5: For best results, chamois the vehicle dry using a good quality chamois or soft cloth.

To remove bird, bat & bug stains:

- Contaminates such as bird & bat droppings, tree sap and bug splatter are highly corrosive and should be removed from the painted surface of your vehicle as soon as possible.
- Do not scrub, pick-off the stain or use any abrasive cleaners. This may damage the painted surface.
- Use neat (undiluted) Omni shampoo on the affected area allowing the shampoo to soak and moisten the area before removing, then wash as per above instructions.
- In the event you are unsuccessful in removing the contaminate, contact Omni in your state.

Omni is the only supplier and authorised application installer of Omni Nano-Ceramic Surface Coating.

OMNI CARE INSTRUCTIONS.

INTERIOR SURFACE COATINGS

Leather Coating

- Clean the leather surfaces of your vehicle regularly (e.g. fortnightly) using a clean damp cloth to maintain the protected surfaces.
- If a spill occurs on the treated leather surface, immediately absorb the spill with a clean non-coloured cloth. If the stain has been allowed to dry, use a non-coloured cloth dampened with mix of warm water and a pH neutral shampoo and gently rub the stained area until clean.
- If the leather surface is repaired or replaced, the Omni product must be re-applied to those areas. Please call 1300 801 917 to discuss any reapplication queries or to arrange reapplication.

Fabric & Carpet Coating

- Clean/vacuum the fabric/carpet of your vehicle regularly (e.g. fortnightly) to maintain the protected surfaces.
- If a spill occurs on the treated fabric/carpet surface, immediately absorb the spill with a clean non-coloured cloth. If a stain persists or has been allowed to dry, use a non-coloured cloth dampened with mix of warm water and a pH neutral shampoo and gently rub the stained area until clean.
- If the fabric/carpet surface is repaired or replaced, the Omni product must be re-applied to those areas. Please call 1300 801 917 to discuss any reapplication queries or to arrange reapplication.

Vinyl Coating

- Clean the vinyl surfaces of your vehicle regularly (e.g. fortnightly) using a clean damp cloth to maintain the protected surfaces.
- If a spill occurs on the treated vinyl surface, immediately absorb the spill with a clean non-coloured cloth. If the stain has been allowed to dry, use a non-coloured cloth dampened with mix of warm water and a pH neutral shampoo and gently rub the stained area until clean.
- If the vinyl surface is repaired or replaced, the Omni product must be re-applied to those areas. Please call 1300 801 917 to discuss any reapplication queries or to arrange reapplication.

Omni is the only supplier and authorised application installer of Omni Interior Surface Coating.



PRE-DELIVERY DETAILING GUIDE

BASIC WASHING REQUIRED ITEMS.



THREE BUCKETS

For wash, rinse and wheels.
Preferable to have a grit guard.



WHEEL MITT OR BRUSH



PAINT MITT OR BRUSH



MICROFIBRE TOWELS



TERRY TOWELS



CLAY BARS



HOSE

TIP: Giving you the advantage of sourcing the most suited & successful candidate for your dealership.

WASH YOUR WASHES.

- Always clean out your buckets after every use.
- Detailing towels need to be washed separately.
- Never wash with other towels or clothes.
- Always use a liquid detergent and not a powder as any undissolved powder could scratch the paint.
- Dry separately on low heat.

BASIC WASHING TECHNIQUE.





PREPARATION OF CAR FOR POLISHING

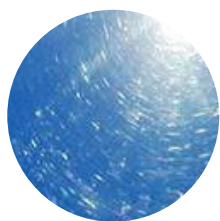
IDENTIFICATION OF DAMAGE TO THE PAINT

COMMON PAINT DEFECTS.

New and Used vehicles generally require an element of pre-delivery paint work preparation or rectification prior to delivery or application of an aftermarket surface treatment.

Vehicle conditions will vary, but can include swirling, holograms, sanding marks, overspray, environmental damage, fall out etc.

It is important to be able to identify these conditions, so the right rectification method, tools and consumables can be applied.



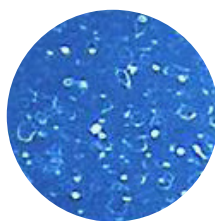
light swirl
marks/stains &
scratches



deeper
swirl marks/
spiderwebs



deep
scratches



water
etches



buffer marks/
hologram
effect

CLEAR COAT

BASE COAT

PRIMER/ETCHER

BODY MATERIAL SUBSTRATE

TYPES OF PAINT.

+ Hard Paint Water Based (120-150micron)

Generally European vehicle manufacturers that use a ceramic paint.

Mercedes

BMW / Mini

Lamborghini

VW / Audi

+ Medium Paint Water Based (70-120 micron)

Volvo

Skoda

Porche

MG

Ford

Peugeot

+ Soft Paint – Water Based – Thinner in general (50-70 micron)

Mazda

Toyota

Lexus

Hyundai

Kia

Suzuki

Subaru

Jeep

Mitsubishi

TIP: A surface that has been re-painted can come in at over 200micron. If a vehicle is tested and it comes in at 200, then we know this car has had a repair.

PREPARATION FOR POLISHING.

+ STEP 1

Tape

Using a masking tape, ensure you tape the plastic trims, surrounds, badges, moulds, pillars etc.

+ STEP 2

Organise

Arrange yourself with the necessary tools to complete the job.








Set up in safe environment with good light but never direct sunlight.

- Clean microfibres.
- Clean polishing pads.
- Machine (look at how the machine is to be powered, safety location of cord, ensure cord will not hit vehicle surface).

+ STEP 3

Identify

Identifying appropriate polish or compound from the table below:

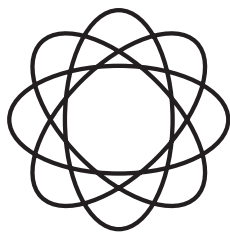
	HEAVY CUT	MEDIUM CUT/ SWIRLS & HOLOGRAM REMOVAL	HIGH GLOSS FINISH
 RANDOM ORBITAL BUFF			
 Fast Cut Liquid AK15	Fast Cut Liquid AK15		
 Platinum Rubbing Comp AK25		Platinum Rubbing Comp AK25	
 Fluororesin Polish AK50			Fluororesin Polish AK50

POLISHING

+ Heavy Cut Polishing

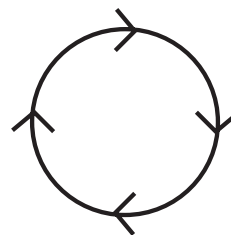
1. Section off your work area.
2. Apply approximately 5-6 pea size drops of the compound on the polishing pad.
3. Place pad on vehicle, turn machine on speed 1, to evenly spread compound on surface.
4. Always use flat pad surface with full contact.
5. Proceed to increase speed to 3-4, maintain control.
6. Time of polishing required will depend on surface of individual vehicle.
7. Move on to next section and repeat process.
8. Always overlap sections when moving onto next Random Orbital vs Rotary Polishers.
9. Please note same polishing process is then used as you proceed through using softer pads with gloss finish.

+ Random Orbital Oscillating Vs Rotary



Random Orbital Polisher

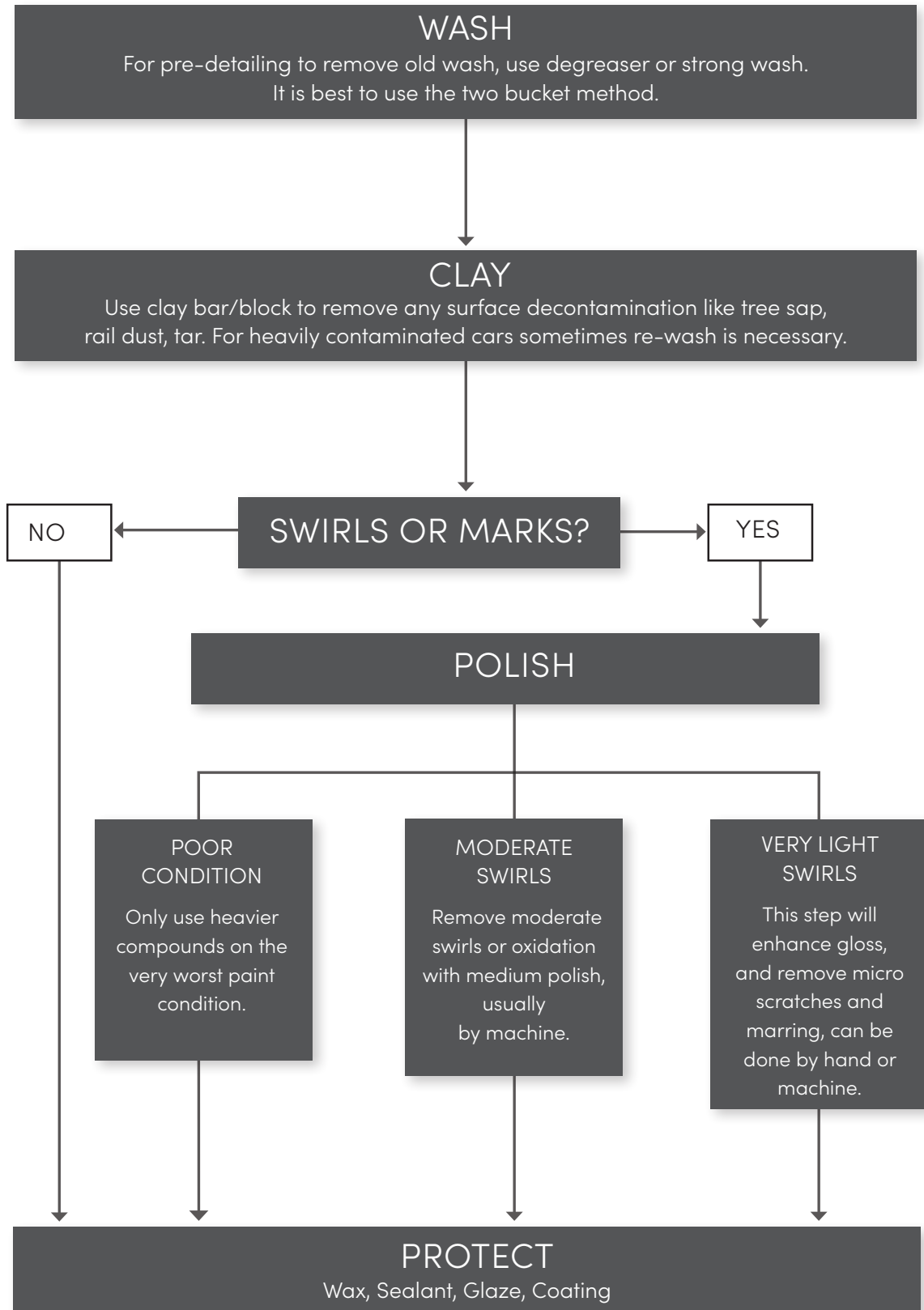
Pad oscillates on varying elliptical orbits.
Advantage: Sanding, buffing and polishing.



Rotary Polisher

Pad spins in a constant circle.
Advantage: Paint, rust and stain removal.

DETAILING FLOW CHART.



MOST COMMON MISTAKES.

+ Dry wiping paint

- Wiping a vehicle with little to no lubrication will cause scratching.
- Your hand is an abrasive, so wiping your hand across the paint will cause scratches.
- Dirt and dust should be washed off properly.

+ Incorrect claying resulting in scratches

- As most things, a clay mitt or bar is an abrasive.
- If not used with a lubricant or is not clean, it can cause scratches.
- Used correctly, claying is a tool to remove contaminants with lubricants.
- Clay bars cannot polish out scratches.

+ Polishing with no result

- Am I using the incorrect pad?
- Am I using the incorrect compound?
- Do not fall into the error of using a hard cut compound on a gloss finishing pad.

+ Surface heat

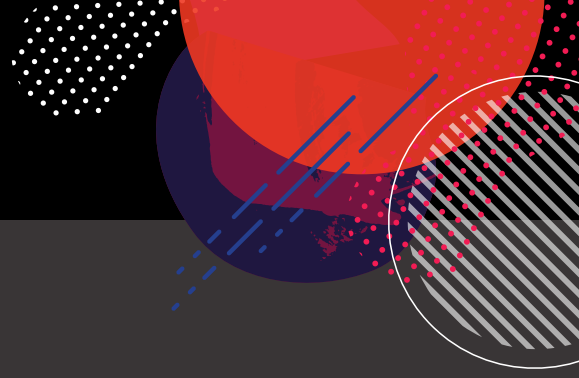
- Lower machine speed.
- Reduce continuous time on that surface section.

+ Heated edges

- Too much friction on edges can cause the paint to burn.
- Reduce speed and time on concentrated area.

+ Damage to plastics/moulds/badges

- Mask all sensitive areas.



OHS

- As always, when moving vehicles, be alert of who is around you and take extreme precaution.
- Park in the shade and never work on a hot surface.
- Know what you are using and observe the safety instructions.
- No matter what you are using, gloves, goggles, masks etc are generally available.
- Remember safety begins with you.